

## Education

Advance your career by earning clock hours, certificates and certifications through the MPI Academy and our signature events like WEC and EMEC.

## Networking

MPI connects you with a global community of meeting and event professionals. Engage online through the MyMPI online community or face to face at our global live events and local chapter meetings.

## Business Exchanges

Suppliers and planners are both looking for partners to make meetings great. From our Hosted Buyer Program to abundant sponsorship packages, we've got perfect opportunities for your brand and bottom line.



"MPI has introduced me to a lot of people who share my enthusiasm, people I now call friends. Its affect on my life can be summed up in one word: huge!

**Berend Bouwman**  
Business Development Manager,  
Amsterdam RAI  
MPI Netherlands Chapter



## Meeting Suppliers:

MPI delivers the best networking and business exchanges to meet your needs and advance your career.

*(Just look at all these happy MPI faces.)*

Our MPI Member Engagement Team is available to answer your questions.

**Phone:** 1-866-318-2743  
**Europe:** +49.172.874.3479  
**Canada:** 905.286.4807  
**Email:** feedback@mpiweb.org

[www.mpiweb.org](http://www.mpiweb.org)



MEETING PROFESSIONALS INTERNATIONAL

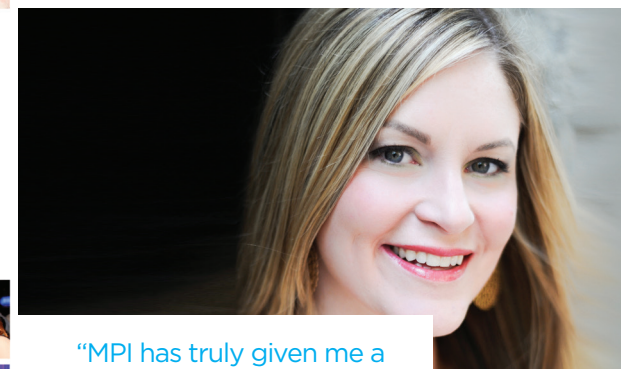
*The first choice in education and networking for meeting and event professionals.*

© Copyright 2016. Meeting Professionals International, Dallas, Texas, USA. All rights reserved. Revised 5/5/2016.

## Meeting Professionals International

is the largest and most vibrant global meeting and event industry association. Founded in 1972, the organization provides innovative and relevant education, networking opportunities and business exchanges, and acts as a prominent voice for the promotion and growth of the industry. MPI membership comprises approximately 18,500 members belonging to more than 80 chapters and clubs in 22 countries.

Join MPI today at [www.mpiweb.org/join](http://www.mpiweb.org/join)



"MPI has truly given me a great foundation for all the success I've enjoyed in my career, and I know I would not be where I am today if MPI weren't a part of my life."

**Judith Holler, CMP**  
Founder, HOLLA! Productions, LLC  
MPI Chicago Area Chapter





## Chapter Affiliation

With more than 80 chapters and clubs in 22 countries, chapter affiliation provides additional opportunities for networking, education, and business exchanges all within your local community.



## Hosted Buyer

MPI's Hosted Buyer Program is the ideal way to engage qualified planners outside of a traditional trade show. We pre-select experienced planners so you're showcasing your brand to the right people with the right buying power.



## The Meeting Professional

MPI's multiple-award-winning magazine delivers superior editorial content on meeting industry trends, opportunities, and issues facing the industry. And it's the perfect place to advertise your brand to the people who need to see it the most.

# Supplier Membership Levels & Benefits

	Essential	Preferred	Premier
Member Directory Listing & Access	●	●	●
Global Supplier Marketplace	●	●	●
MPIPulse weekly newsletter	●	●	●
MPI NewsBrief e-newsletter	●	●	●
Professional Development on Demand	●	●	●
Free Education Webinars	●	●	●
Member Connect Advisor	●	●	●
MPI Industry Research	●	●	●
The Meeting Professional® monthly magazine	●	●	●
Access to Recorded Event Sessions	●	●	●
Member Rate for Global Events	●	●	●
Full access to MyMPI Online Community	●	●	●
Advance Job Board	●	●	●
Culture Active Tool	●	●	●
Member Certificate	●	●	●
Access to Post Event Materials	●	●	●
Ability to Track Clock Hours	●	●	●
Access to Scholarships	●	●	●
Member Rate for MPI Bookstore	●	●	●
Rise Award Consideration	●	●	●
Chapter Affiliation & Discounts at Chapter Events		●	●
Chapter Volunteering		●	●
CMP Application Assistance		●	●
Access to Direct Marketing Lists			●
VIP Pass at Global Events			●
Advance Access to Meetings Outlook			●
Career and Academic Counseling 1:1			●
Concierge Line			●



The World Education Congress (WEC) is MPI's signature event through which we deliver top-rated education, networking and business opportunities to the meeting and event community. WEC is designed to inspire to ignite what's possible with meetings and events.



The annual European Meetings & Event Conference (EMEC) is one of MPI's signature events through which innovative education, networking and business exchanges are delivered exclusively to MPI's European community.



Hospitality Sales and Marketing Association International (HSMAI) and MPI offer joint membership to both organizations to new or current members of either organization. If you are interested in this joint membership opportunity, contact us at 1-866-318-2743.

## Supplier Membership Pricing

- Premier Membership  
**US/CAD \$569 EUR €519**
- Preferred Membership  
**US/CAD \$475 EUR €450**
- Essential Membership  
**US/CAD \$399 EUR €369**

New memberships include a \$50/€50 application fee.

The connections you make are lifelong, and MPI will bring them to you. Join today at [www.mpiweb.org/joinmpi](http://www.mpiweb.org/joinmpi).